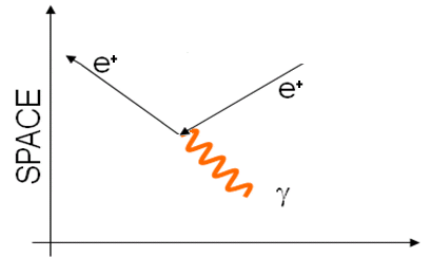
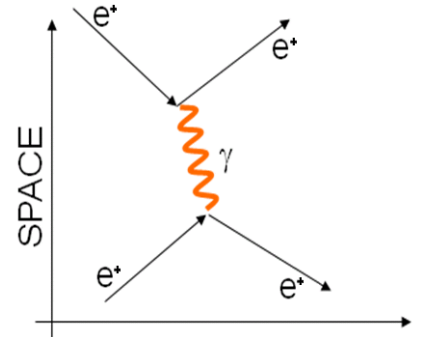


The following questions are about Feynman diagrams.

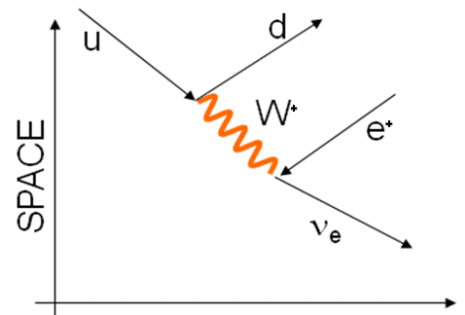
16. Explain what is happening in this Feynman diagram.



17. Explain why this Feynman diagram, showing a positron repelling a positron, is incorrectly drawn.



18. Explain what is happening in this Feynman diagram. What kind of decay is illustrated? Add two quarks to complete the top of the diagram so that it shows the common particles in the reaction.



19. Fill in the boxes with the particles that are not identified in the Feynman diagram.

