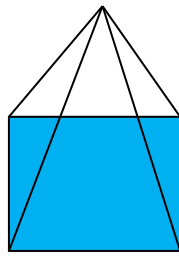
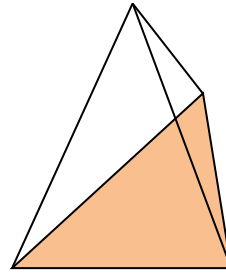


Pyramids and Cones

- A pyramid is a 3-D object that has a flat base and the edges come to a point at the top.
i.e.



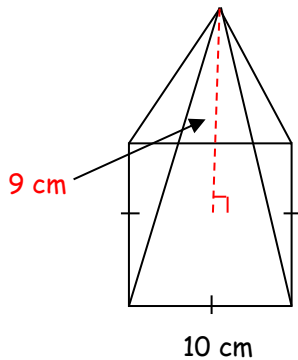
Square-Based
Pyramid



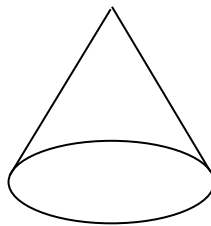
Triangular-Based
Pyramid

- There are two heights to be concerned with when examining a pyramid. The vertical height and the slant height.
 - The vertical height, h , is measured from the center of the base to the point.
 - The slant height, s , is measured from the side of the base to the point.
- Since pyramids are made up of triangular shapes be prepared to use the Pythagorean Formula.

Ex/ Calculate the slant height of the pyramid below.

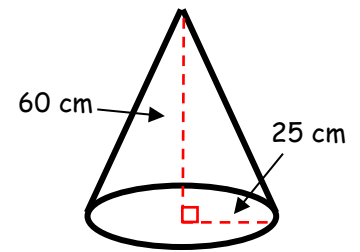


- A cone is a special version of a pyramid. It also has a flat base with edges that come to a point. However, its base is a circle.

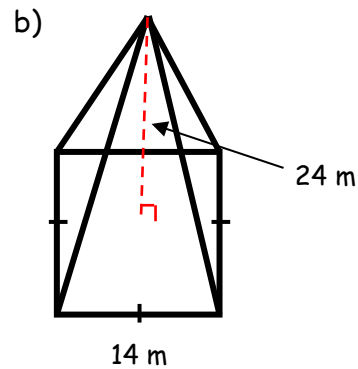
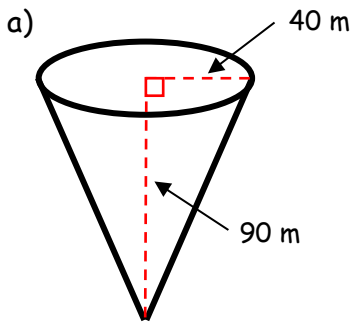


- When discussing pyramids and cones we often discuss the lateral area. By this we mean all of the surfaces, **excluding the base**.

Ex/ A pylon is the shape of a cone is shown below. The outside surface of the cone is to be painted, but not the bottom. What is the area to be painted?



Ex/ Calculate the surface area of the following shapes.



Ex/ Calculate the surface area of the composite shape shown below.

